

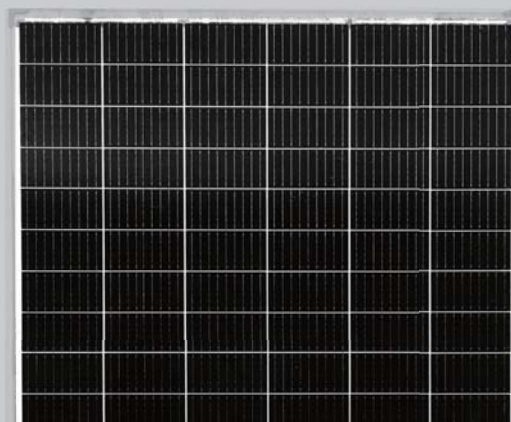
Swan Bifacial HC 72M 395-415 Watt

MONOCRYSTALLINE MODULE

Positive power tolerance of 0~+3%

ISO9001:2015, ISO14001:2015, ISO45001:2018
certified factory.

IEC61215 (2016), IEC61730(2016), certified products.



KEY FEATURES



9 Busbar Solar Cell

9 busbar solar cell adopts new technology to improve the efficiency of modules, offers a better aesthetic appearance, making it perfect for rooftop installation



PID Resistance

Excellent Anti-PID performance guarantee limited power degradation for mass production.



Higher Lifetime Power Yield:

0.55% annual power degradation
30 year linear power warranty



Light-weight design:

Light-weight design using transparent backsheet for easy installation and low BOS cost.



Higher power output:

Module power increases 5-25% generally (per different reflective condition)
lower LCOE and higher IRR



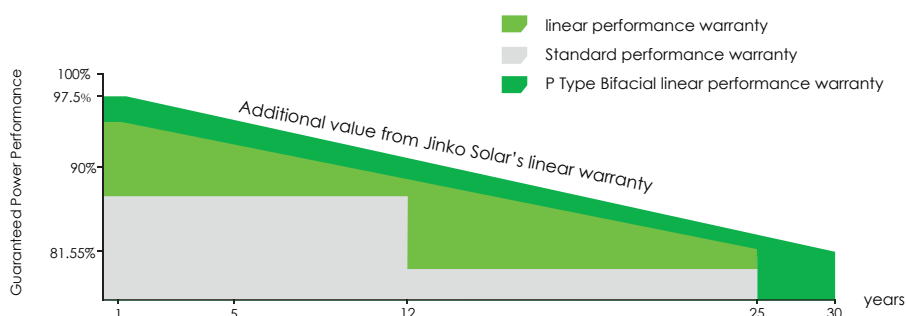
Better low-light performance:

Excellent performance in low-light environments
(e.g. early morning, dusk, and cloud, etc.)

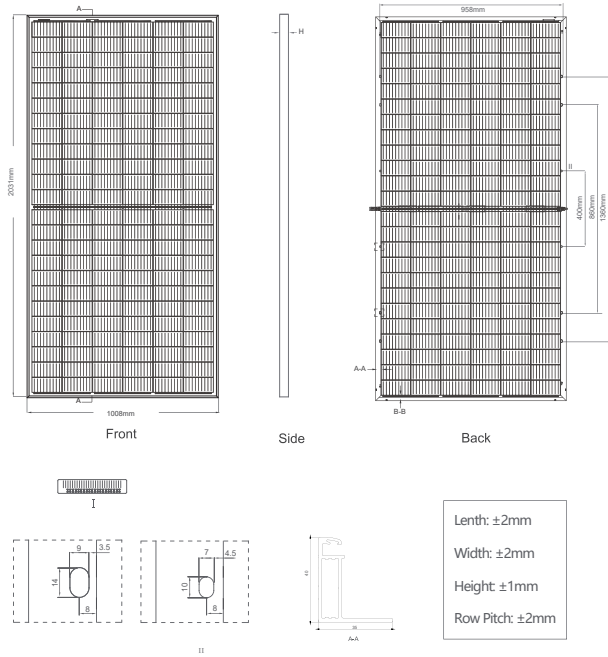


LINEAR PERFORMANCE WARRANTY

12 Year Product Warranty • 30 Year Linear Power Warranty
0.55% Annual Degradation Over 30 years



Engineering Drawings

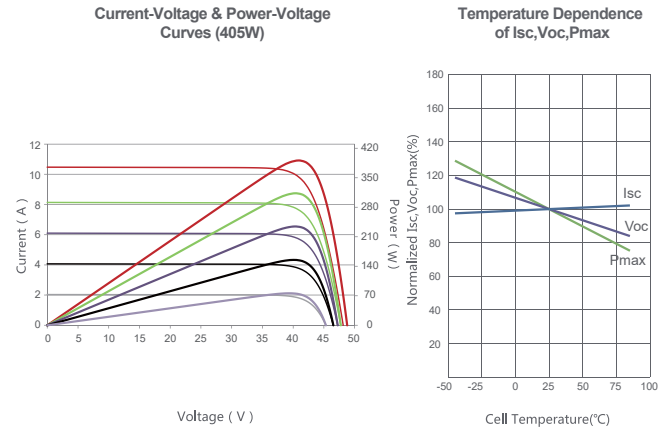


Packaging Configuration

(Two pallets = One stack)

27pcs/pallets, 54pcs/stack, 594pcs/ 40'HQ Container

Electrical Performance & Temperature Dependence



Mechanical Characteristics

Cell Type	Mono PERC 158.75×158.75mm
No. of cells	144 (6×24)
Dimensions	2031×1008×40mm (79.96×39.69×1.57 inch)
Weight	23.3 kg (51.3 lbs)
Front Glass	3.2mm, Anti-Reflection Coating, High Transmission, Low Iron, Tempered Glass
Frame	Anodized Aluminium Alloy
Junction Box	IP67 Rated
Output Cables	TUV 1×4.0mm ² (+): 290mm, (-): 145mm or Customized Length

SPECIFICATIONS

Module Type	JKM395M-72H-MBB-TV		JKM400M-72H-MBB-TV		JKM405M-72H-MBB-TV		JKM410M-72H-MBB-TV		JKM415M-72H-MBB-TV	
	STC	NOCT	STC	NOCT	STC	NOCT	STC	NOCT	STC	NOCT
Maximum Power (Pmax)	395Wp	293Wp	400Wp	297Wp	405Wp	301Wp	410Wp	304Wp	415Wp	308Wp
Maximum Power Voltage (Vmp)	40.85V	38.03V	40.95V	38.12V	41.04V	38.20V	41.13V	38.29V	41.26V	38.42V
Maximum Power Current (Imp)	9.67A	7.71A	9.77A	7.79A	9.87A	7.87A	9.97A	7.95A	10.06A	8.02A
Open-circuit Voltage (Voc)	48.67V	45.84V	48.77V	45.94V	48.87V	46.03V	48.97V	46.12V	49.07V	46.22V
Short-circuit Current (Isc)	10.45A	8.44A	10.52A	8.50A	10.59A	8.55A	10.66A	8.61A	10.73A	8.67A
Module Efficiency STC (%)	19.29%		19.54%		19.78%		20.03%		20.27%	
Operating Temperature(°C)	-40°C~+85°C									
Maximum system voltage	1500VDC (IEC)									
Maximum series fuse rating	25A									
Power tolerance	0~+3%									
Temperature coefficients of Pmax	-0.35%/°C									
Temperature coefficients of Voc	-0.29%/°C									
Temperature coefficients of Isc	0.048%/°C									
Nominal operating cell temperature (NOCT)	45±2°C									
Refer. Bifacial Factor	70±5%									

BIFACIAL OUTPUT-REAR SIDE POWER GAIN

		415Wp	420Wp	425Wp	431Wp	436Wp
5%	Maximum Power (P_{max})	415Wp	420Wp	425Wp	431Wp	436Wp
	Module Efficiency STC (%)	20.26%	20.52%	20.77%	21.03%	21.28%
15%	Maximum Power (P_{max})	454Wp	460Wp	466Wp	472Wp	477Wp
	Module Efficiency STC (%)	22.19%	22.47%	22.75%	23.03%	23.31%
25%	Maximum Power (P_{max})	494Wp	500Wp	506Wp	513Wp	519Wp
	Module Efficiency STC (%)	24.12%	24.42%	24.73%	25.03%	25.34%

* STC: Irradiance 1000W/m²

Cell Temperature 25°C

AM=1.5

NOCT: Irradiance 800W/m²

Ambient Temperature 20°C

AM=1.5

Wind Speed 1m/s

* Power measurement tolerance: $\pm 3\%$

The company reserves the final right for explanation on any of the information presented hereby. JKM395-415M-72H-MBB-TV-A2.1-EN-F40